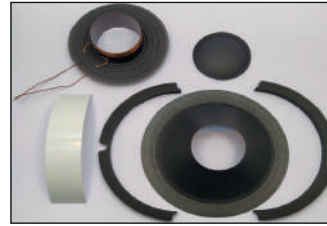


# MCF SERIES REONE PROCEDURE

## 1. MATERIALS



Contact glue rubber type, soldering iron, tin, glue, plastic spacer, razor knife, tweezers, masking tape, epoxy bicomponent glue, cloth rags and methyl ethyl ketone (MEK).

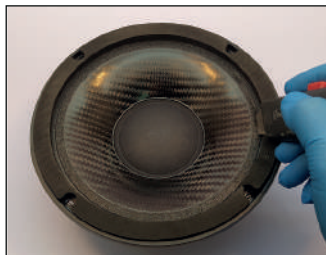


Supplied material: moving parts (Coil/Spider + Membrane), gas-kets, dust cap, plastic spacer and latex (white color). Check that moving parts have not been damaged during transport.

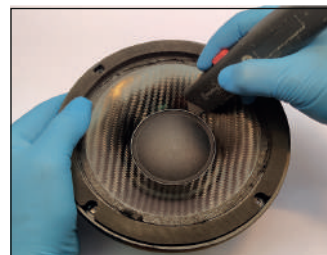


If possible, an audio oscillator and also amplifier would be useful.

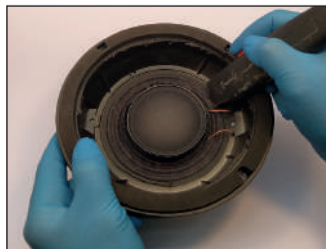
## 2. PREPARATION



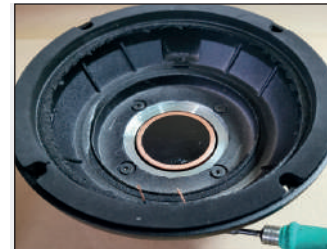
Using razor knife, cut the upper part of membrane.



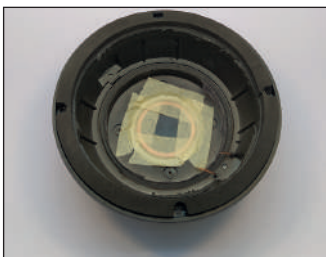
Using razor knife, cut the lower part of the membrane and remove it.



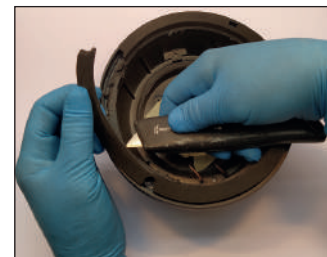
Using razor knife, cut the voice coil lead wires, the spider and remove the rest of the components of moving part.



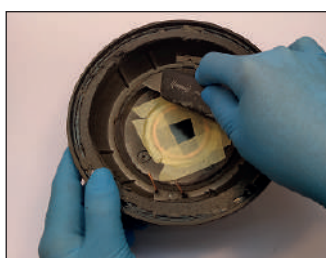
Unsolder the old voice coil lead wires from the outside part of the housing and verify the good condition of the connection.



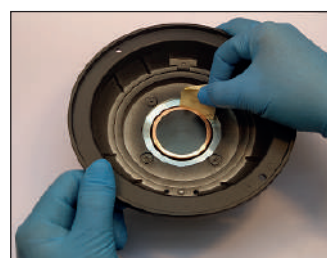
Protect the gap using masking tape to avoid particles getting inside the gap.



Remove the gaskets and using MEK and razor knife, clean the upper surface of the housing removing rests of glue and surround.



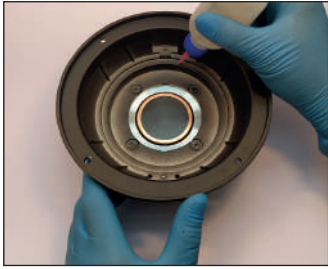
Using MEK and razor knife, clean the bottom surface of the basket removing rests of glue and spider.



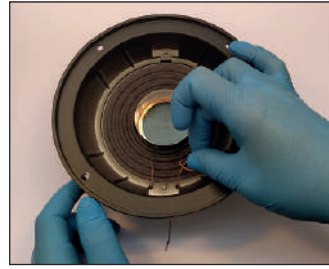
Fold a piece of masking tape lengthwise around a piece of cardboard (70 mm x 25 mm x 1 mm), with adhesive side exposed and insert it in the air gap and rotate. Repeat this until tape remains clean when withdrawn.

# MCF SERIES RECONE PROCEDURE

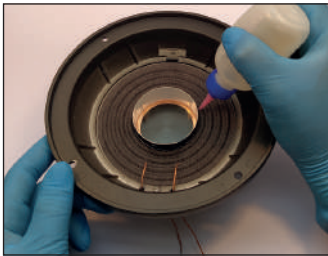
## 3. INSTALLATION



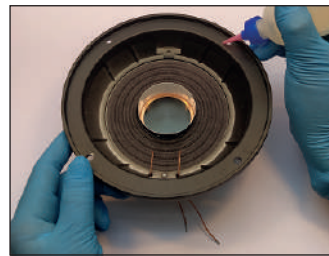
Apply a bead of contact glue<sup>1</sup> on frame surface where spider or spider ring will mount.



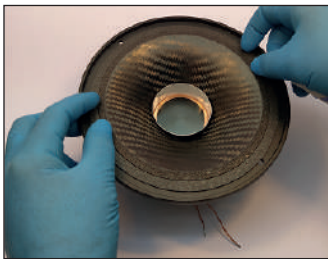
Insert the plastic gauge in the coil assembly, place the coil inside the air gap and pass the voice coil lead wires through the terminal holes and solder.



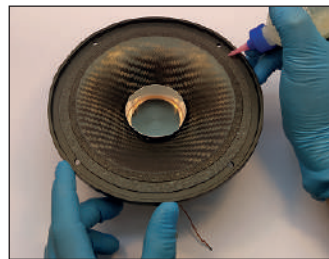
Apply a bead of contact glue between the coil and the spider to glue the membrane.



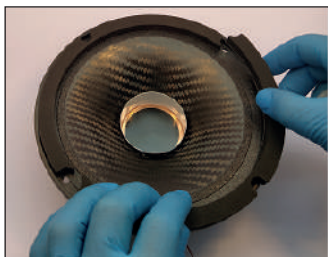
Apply a bead of contact glue<sup>1</sup> on frame surface where surround will mount.



Glue the membrana to the coil.



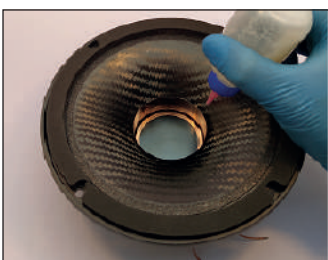
Apply a bead of contact glue on gasket area. Wait for 5 minutes.



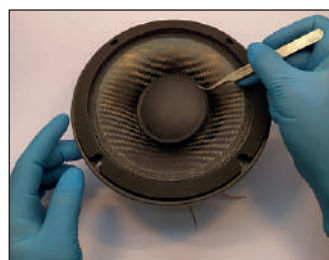
Place gaskets on frame in proper position. Rotate down the device and allow glue 8 hours to dry.



Retire the gauge.



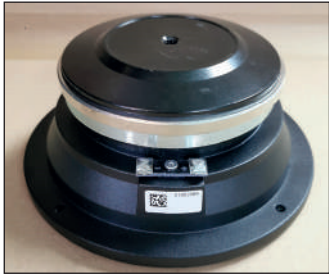
Apply a bead of contact glue on dust cap area.



Glue the dust cap and allow at least 24 hours to dry.

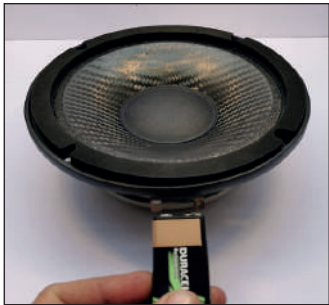
# MCF SERIES RECONE PROCEDURE

---



Trim the excess of the voice coil lead wires.

## 4. VERIFICATION



Check the loudspeaker polarity using a battery by connecting the positive terminal of the battery to the positive one of the loudspeaker. Do the same with negative terminals. Moving part should move upwards.

---

<sup>1</sup> In case of high power models (>150 W) we strongly recommend to use **epoxi bicomponent adhesive** to glue both spider and dust cap.